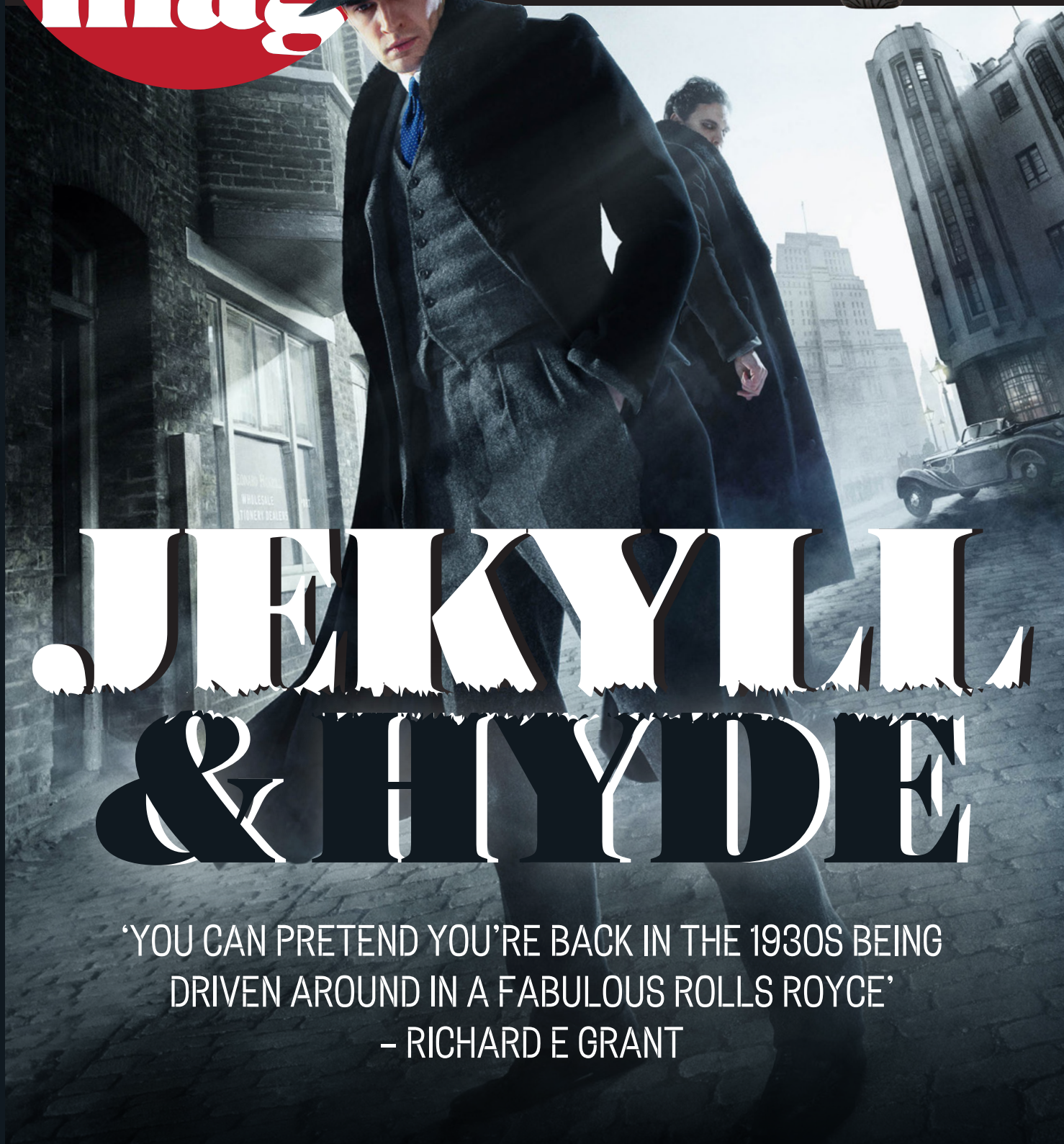


free
car
mag

VOLVO PAINT - GLOWS
CATERHAM 7 - SCARES
TONY SOPRANO'S
CADILLAC - MENACES



JEREMY & HYDE

'YOU CAN PRETEND YOU'RE BACK IN THE 1930S BEING
DRIVEN AROUND IN A FABULOUS ROLLS ROYCE'

- RICHARD E GRANT

BEN COLLINS

STUNT DRIVER



This week

Jekyll & Hyde on ITV 1 every Sunday at tea time, we love it at Free Car Mag. Reminds us of so many motors that have split personalities. Caterham 7s are a bit like that. They look all innocent, quaint and old fashioned when they are parked up. Drive one and it is pure Hyde. Wonderful.

Getting back to Jekyll & Hyde let's not sit on the fence here, it is far better than Dr Who. That's because it actually has a plot and the 1930s setting is inspired. Not only that, the cars and clothes are wonderfully stylish.

The rest of Free Car Mag is choc full of the usual nonsense. So Chris Kamara mucking about in a car park with a Vauxhall Corsa and a Lamborghini tickled our fancy. Tony Soprano's Cadillac being on sale, excited us. Volvo's LifePaint is truly inspired and a real life saver.

Welcome to another weirdly diverse Free Car Mag which continues to point out that the 1970s are coming back, with a cool car vengeance see page 25.



James Ruppert

EDITOR james@freecarmag.co.uk

The Team

Editor/Publisher James Ruppert

james@freecarmag.co.uk

Contributor Jayne King

Advertising Dee Ruppert

ads@freecarmag.co.uk

Product Tester Livy Ruppert

Web Design Chris Allen

The Free Car Mag is published every Monday morning and is distributed free.

Sub Editor Marion King

Accounts Dee Ruppert

Tel 0788 540 1977

Email contact@freecarmag.co.uk

Phassouri House, School Road,

Norfolk IP25 7QU

©2015 Free Car Mag. A registered trademark. No part of this magazine may be reproduced, stored in a retrieval system or transmitted in any form except by agreement of the publisher. The publisher makes every effort to ensure that the contents are correct but cannot accept responsibility for errors and omissions. Unless otherwise stated competitions and promotions are not open to readers outside of the UK, please see terms and conditions online.

- 4 News Events Celebs – The Q Awards
- 6 Jekyll & Hyde Charlie Higson explains
- 8 Tom Bateman on being Jekyll and Hyde
- 10 Richard E Grant on being Bulstrode
- 12 Caterham's new increasingly Hyde range
- 14 Back Seat Driver on the trade in stolen cars.
- 15 Used Car Direct Nissan Qashqai vs Peugeot 3008
- 18 Chris Kamara's Challenge
- 19 Tony Soprano's Cadillac Escalade for sale
- 23 Wanted – Seiko Premier, TUMI luggage, Toy Engine, Howl Film.
- 24 Volvo LifePaint
- 25 1970s cars on TV and film
- 26 Next Issue – The Simpsons

CITROËN ROCKS THE Q AWARDS

The 2015 Q Awards In Association With Absolute Radio took place at the Grosvenor House Hotel in London. A fleet of Citroën C4 Cactus models were on hand to drive the celebrity guests to the ceremony in style. James Bay was named Q Best New Act. The Q Best Solo Artist award, presented by Citroën, was won by Ed Sheeran for the second consecutive year. Take a closer look at just some of the stars in Citroën assisted attendance.

SPOTTED
OUT AND
ABOUT



Kitty & Daisy



Tom Jones



Corinne Bailey Rae



Noel Gallagher



Gary Newman



Foxes



1 Long Satin Gloves
£12 [John Lewis](#)

2 Printed Slip Dress
£39 [Very.co.uk](#)

3 Strappy High Heels
£25 [Misguided](#)

4 Citroën C4 Cactus
from £12,990
[citroen.co.uk/cactus](#)

Get the look

1 Loafers
£49.99 [House of Fraser](#)

2 Slinky Trousers
£12.00 [Boohoo](#)

3 Black T Shirt
£10 [Matalan](#)

4 Blue Waistcoat
£55.00 [Pretty Ponies](#)

5 Collarless Jacket
£36.00 [Debenhams](#)

6 Citroën C4 Cactus from
£12,990 [citroen.co.uk/cactus](#).



La Roux



Jekyll & Hyde

MONSTER MIAS



Charlie Higson writer and executive producer of *Jekyll & Hyde* explains what the new adventure series is all about.



I'd really enjoyed writing about the 1930s when I wrote a series of Young James Bond novels a few years ago. It's such a rich era historically and is recent enough for people to behave and talk in a recognisably modern manner, but distant enough for me to be able to treat it as a sort of fantasy playground (although I am expecting the usual complaints about the wrong sort of buttons on the soldiers' uniforms). This was a stylish era of men in nice hats and suits, when women's fashion were very sexy, but they were also allowed to be tomboyish, funny and tough. It was an era of modernism and streamlining and swing. In a nutshell - the 30s were cool. If we made our central character young then hopefully he would be cool as well. So I didn't want him to be the original middle-aged Dr Jekyll, I wanted him to be innocent and likeable, someone you could identify with. And Hyde? Hyde is the ultimate bad boy. Dangerous, amoral, hungry, half mad, fully sexy, fearless and powerful - he's who we all think we are when we're drunk.

The 30s was also the era of the first great cycle of Hollywood monster movies - mostly made by Universal - Frankenstein and Dracula, the Wolfman, the Mummy White Zombie, and I really wanted to do my own versions of all these monsters. What the hell, if I was asking the audience to accept one monster - in the central role - why not give them a whole world of monsters?

The main thing I changed from the original book is the concept that the ability to turn into Hyde is passed on genetically. I came up with the idea that unwittingly the original Dr Jekyll woke something that was latent within him when he took his fateful potion. What if he then fathered an illegitimate son when he was in his Hyde persona? And what if his son inherited his shape-shifting abilities? And he then had another son of his own... and called him Robert?

So, I had all my elements in place. What story was I going to tell? The details sort of decided themselves...

As our story opens, Dr Robert Jekyll is a young, newly qualified, doctor who has been brought up by foster parents in Ceylon. He is the grandson of the original Dr Henry Jekyll, but has no idea of his past, and the 'family curse'. Events quickly conspire against him, however, the past catches up with him and long buried family secrets rise. The series is about Robert trying to find out who he is, and why he is like he is and trying to survive in a world where two opposing 'Jekyll & Hyde' forces are fighting for his soul.

MIO are a secret government organisation dedicated to removing monsters from our streets. They are a 'Jekyll' organisation, the forces of repression and denial. Tenebrae are the 'Hyde' organisation. An organisation of the very monsters MIO are trying to destroy.

Both sides want him for their own. Which way will Robert turn?





GOOD TO BE BAD

Tom Bateman on being
a misunderstood Monster

What were your thoughts when you heard about this series?

"I absolutely loved the idea and the 1930s setting. I had read the original Robert Louis Stevenson novel and thought the re-imagining writer Charlie Higson created is so much fun. It's something we haven't seen on TV and I had never read anything like it. I loved the dual character and Robert's struggle to come to grips with this evil - or liberated - side. The auditions were great because I got to keep doing these really fun Hyde scenes. There's nothing else like it on TV. The way we're shooting it is so cool and original. We've got the fight guy from Star Wars doing our fights and the director of photography from Peaky Blinders. There's an A- team on this. Everyone coming together and creating this amazing world. A really fun adventure."

Who - or what - is Dr Robert Jekyll?

"Robert is a young doctor who has grown up in Ceylon. He has spent his entire life there with his foster mother and father. Although he obviously knows he is not from that world he doesn't know anything about his past, aside from that he has this hormonal imbalance that makes him go a bit funny. But he's got pills that can keep him under control. Hidden away in Ceylon he's slightly naive of the world and has concentrated on being a doctor and a good man. He's aware of the Hyde part of his character but he doesn't really know what it is yet or about his family history in London."

Tell us about the accident which reveals he is not like other men?

"Robert is busy vaccinating children at a local clinic when a lorry drives off the road and smashes through

the medical centre. He sees a young girl has been pinned underneath the lorry and the good side of Robert tells him he needs to help and he runs straight into the centre without a thought for his own safety. When he tries to lift this truck Hyde kicks in, because Robert is under extreme pressure. Just when you think he's a good guy, Hyde takes over and actually threatens the child's life. It's pretty shocking and dark. But then the audience will see Hyde isn't truly evil as he's just out to enjoy himself and have fun."

What triggers Jekyll's transformation into Hyde?

"Stress, anger, rage, jealousy and lust provide the trigger for the transformation from Jekyll into Hyde. Mostly it's anger when he just loses it. Charlie Higson has brilliantly explored the frustration of this character. Hyde is stronger than Jekyll and Hyde is a necessary 'evil' because he can do things others can't. Robert can think and plan, but it's Hyde's strength and boldness that is actually required. He's really struggling to hold everything together. All these secrets and double lives. It's wonderful setting the story in the 1930s because of the very British way



people behaved."

Is Hyde necessarily a bad man?

"The writer Charlie Higson gave me a book about the Greek god Pan to read. Everybody hated Pan. Traditionally they were very threatened by him because he was an evil, powerful guy no-one really understood. But actually he's the god of mischief. So Hyde is a nasty piece of work but, as he says in the series, 'All I want to do is have fun.' And when you're that powerful it's very easy to have fun."





Richard E Grant talks about running MIO and 1930s classic cars

THE ORIGINAL M

Can you tell us who Bulstrode is?

"Sir Roger Bulstrode is the head of the secret service department called MIO - Military Intelligence Other - which, itself, is a secret. It deals with supernatural threats. While people are sleeping by night, the nightmares they dream of are, in fact, a real threat. It's Bulstrode's job to ensure that when the people of Britain wake up their dreams remain nightmares and are not reality. He is a megalomaniac and power crazy. Bulstrode works for the Home Secretary and has to tolerate him and the way he works. But basically he follows his own route, and is always flouting rules. He has some of the madness and obsession of Jekyll and Hyde. He is chasing someone constantly which has become an all-encompassing 24-7 obsession. That's what fires Bulstrode. He orders people around and doesn't get his hands dirty. It's his way or no way. His life has been dedicated to eliminating monsters, and he is completely obsessive. His character lives alone in a bubble to ensure he's not going to be betrayed by someone else. You can't get at him through emotional blackmail."

What was your initial reaction when you were first approached about the role?

"I thought it was going to be the original story from 1886. I didn't realise it was to be re-booted and re-located into the 1930s and with the focus upon

Jekyll's grandson. Writer and creator Charlie Higson is a master, having written the young James Bond novels. Basing the story on Jekyll's grandson means you can go in all sorts of directions."

Can you tell us about Bulstrode's extravagant look?

"All the men have one costume. So I am in a three-piece tweed suit. Then I have this cashmere camel coat with leather gloves, tan hat and a fake fur collar. And that's the costume he wears throughout."

Can you tell us about Bulstrode's magnificent office at MIO which is linked to an underground bunker?

"He has a very big desk to sit behind. Bulstrode doesn't stand up for many people. There's a large deco brass Sun motif behind his desk so he looks like he's sitting on his own self-appointed throne. This man has a very large ego. At one end of the office is a lift that takes you down to an underground bunker and lab which is very long with a low ceiling. It's like a 'Thirties' prototype of the James Bond back room. It's the 1930s art deco version of espionage as we subsequently know it from the movies."

What does the 1930s setting bring to the series?

"You can shamelessly crib anything that Orson

Welles did much later in Citizen Kane. Low angles, high angles and with a nod to Dr Caligari and those expressionist films of the 1920s. Going in at odd angles is justified. And because art deco was so curvy and angular by turn, it fits that style. People smoked as well. So you can pump smoke into every scene. That immediately gives it a period atmosphere."

What can you divulge about the monsters?

"There are giants, vampires and a man whose face is made of wax that you can physically mould. A treasure trove of monsters, cyclops from Greek mythology. And the premise is that all of them have always been with us. Sometimes you get elements of the monster, half in make-up, when you're filming. But the magic happens inside the heads of Charlie Higson, computer graphic artists and animators."

Do you get to drive any period cars in the series?

"I've just done a scene in a Rolls Royce. It was gorgeous. I love cars and I especially love old cars. My character is always driven. Driven and driven by people, in both senses. It's luxurious. You can pretend you're back in the 1930s being driven around in a fabulous Rolls Royce. These cars smell so beautiful inside, wonderfully designed and maintained. There's nothing like them."



MONSTER PERFORMANCE

PROVOKE A CATERHAM AND IT WILL BITE YOU BACK IN THE MOST EXCITING WAY POSSIBLE

SEVEN 270R
£22,995

This year Caterham introduced three brand new additions to its existing range of iconic sportscars the 270, 360 and 480, not only that all Caterham Sevens can now be specified with brand new 'S' or 'R' equipment packages. The three new vehicles sit between the existing range bookends – the entry-level Seven 160 and the supercharged 620R, the most powerful production Seven ever built.

The new £22,995 270 model, powered by the

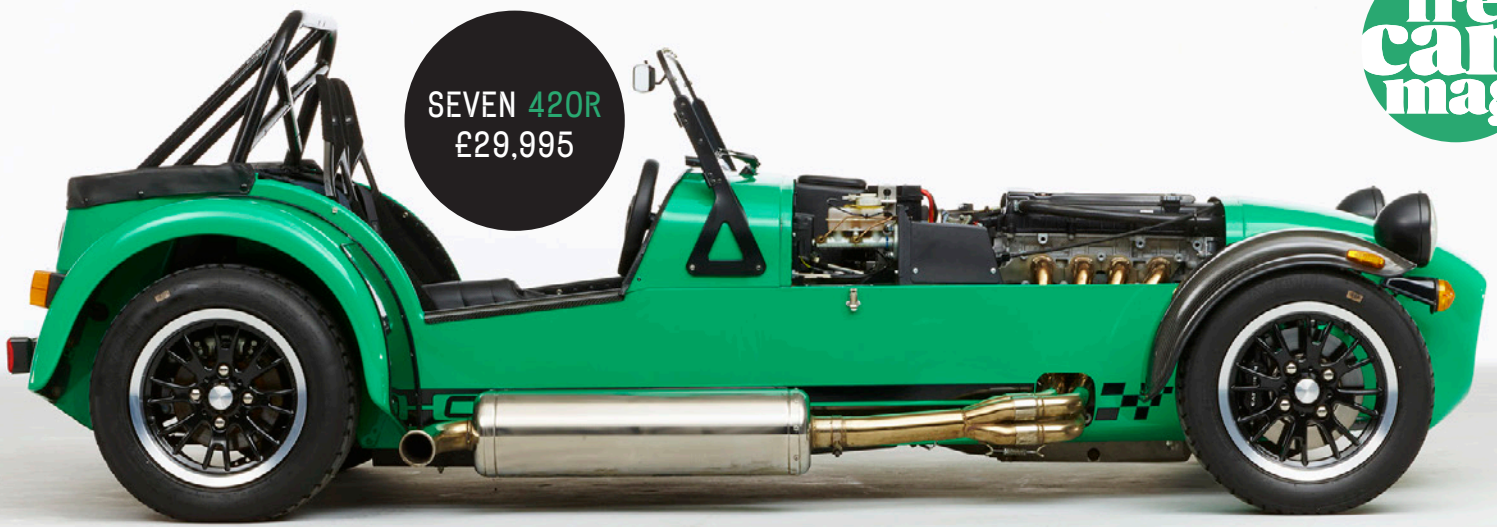
latest-generation 1.6 Ford Sigma engine with variable-valve timing technology and offering a 10bhp power upgrade from the outgoing Roadsport 125 it replaces. It gets to 62mph in just 5 seconds.

Sitting in the middle of the range is the £26,995 Seven 360, which runs the same 2.0 Ford Duratec power unit as Caterham's flagship R300 race cars, offering the perfect balance between road and race track. This model can get to 62mph in just 4.8 seconds.

Finally the £29,995 Seven 420, which features a dry sump and is also powered by the 2.0 Ford Duratec, although benefiting from modifications which offer 210bhp. At the top of the range, is Caterham's mighty 620R, which also runs a finely-tuned 2.0 Ford Duratec that pumps out an extreme 310bhp and reaches



SEVEN 420R
£29,995



0-62mph in 2.8 seconds.

Like all Sevens, the new variants adhere to Caterham's brand mantra of delivering 'accessible fun' through the traditional Caterham minimalistic, lightweight approach to sportscar engineering. Owners though can make them even more comfy (Jekyll) or focused (Hyde) by ordering the special packs.

The 'S' pack is geared towards the casual road driver and includes creature comforts such as a

fully-carpeted cockpit, full windscreen, hood and side screens and leather seats. Meanwhile, the 'R' pack is more track-focused, whilst retaining its road car status by offering limited-slip differential, sports suspension and a four-point race harness.

The 'R' pack also offers 15" Orcus alloy wheels, which have been exclusively designed for Caterham and are 10% lighter than the outgoing 15" alloy wheel. In the cockpit, the unique 'R' rev-counter has been orientated to optimise it for use at high rpm. For customers with pure track driving in mind, a 13" alloy wheel is available as an option with the 'R' pack; customers choosing this option will also benefit from an upgraded suspension geometry set-up to ensure the ultimate in race track handling.

So there you have it, a brace of new Caterhams to suit your mood.



www.caterham.com

SEVEN 360R
£26,995



My Range Rover's Parked in Uganda

Stopping International Car Crime is impossible, right?



A high-level, international car theft operation focused on theft of high value 4x4 vehicles and those equipped with keyless go ignition systems has been broken up by law enforcement agencies and anti-fraud investigators APU Ltd, part of the Automotive Insurance Solutions Group.

APU's unique blend of covert, fourth-generation tracking technology, forensic analysis capabilities and human intelligence expertise allowed officers from the National Crime Agency (NCA) to trace the journey of a Lexus stolen in London to the Ugandan capital, Kampala, where more than a million pounds worth of stolen vehicles were discovered and the car-smuggling ring dismantled.

Identified motor insurance fraud costs the UK an estimated £1.3 billion a year but NCA claims suggest that £100 million in irrecoverable insurance monies were lost in the first three months of 2015 alone due to vehicles being stolen.

NCA officers see these acquisitive vehicle offences as part of a national threat but believe the impact of the operation has shut down the criminal syndicate in Uganda, previously one of the most prevalent

destinations for cars stolen from the UK.

In total, the APU-monitored Lexus led Police to 28 high-value vehicles stolen from the UK, which are now in the process of being repatriated.

Using APU's covert technology, NCA regional manager Paul Stanfield was able to trace the progress of the stolen Lexus on an intuitive Smartphone app as it was shipped illegally from Oman to Mombasa in Kenya and then by road to Kampala in a steel container. It also allowed Police to identify corrupt officials in both Kenya and Uganda, infiltrate the criminal syndicate and understand its operation.

Meanwhile, the co-operation of the team at APU, uniquely made up of ex-Police officers and insurance fraud investigators, was key to the success of the investigation.

APU's forensic data expertise has helped secure convictions in many domestic court cases. Stolen vehicle recovery and false insurance claim prevention undertaken by APU has also been solely responsible for saving approximately £350,000 in the past 12 months. Perhaps we are starting to win the war on car crime, one 4 x 4 at a time.

QUOTES OF THE WEEK

“The officers that arrived on scene described the item as looking like a crash landed UFO!”

UFO' CRASHES ONTO ROAD IN WEST LONDON, FURTHER INVESTIGATION SUGGESTED THE ITEM COULD BE AN UPTURNED PIZZA OVEN.

Volkswagen owner? You may be entitled to compensation. Register your interest in the Volkswagen group claim.

LAWYERS WANT TO HEAR FROM VW CAR OWNERS

“We want to have a car-free center”

OSLO AIMS TO MAKE CITY CENTER CAR-FREE WITHIN FOUR YEARS

Report of a mattress in the carriageway, M6 Toll J4 south. Drive carefully. Officers en route and will hopefully have it

in divan soon :/

CENTRAL MOTORWAY POLICE GROUP

Have your say  @freecarmag1

NISSAN QASHQAI VS PEUGEOT 3008

Family cars have never been more practical, spacious or stylish. So which one should you buy?

WHY BUY?

The Nissan Qashqai is one of the most popular cars on sale in the UK. Everyone loves the high driving position and it is solidly built. Arguably the Peugeot is much posher than the Qashqai with a very upmarket interior plus it is refined and comfortable to drive.

WHICH MODELS?

The Qashqai was introduced in 2007 and was given a makeover in 2010. There are a wide range of excellent diesel and petrol engines, high Tenka specification. The 3008 dates from 2009 and was restyled in 2013. Mid level Active trim has a decent kit. Plenty of excellent engine options.

ARE THEY RELIABLE?

There have been a few recalls with the Qashqai. Overall fixing it is pricey and the suspension is particularly vulnerable. Looking closely at the Warranty Direct statistics the 3008 is cheap to fix and the worst aspect is that the electrical systems are more prone to failure.

HOW MUCH DO THEY COST?

Prices start at around £4000 for the Qashqai and up to £19,000 for late 2013 example before the model was completely revamped. Very similar price range for the Peugeot which overall is slightly cheaper than the more popular Nissan, so it will pay to shop around.

NISSAN QASHQAI

Average Repair Cost £352.59	Axle & suspension 41.92% failure rate	Electrical 11.98% failure rate	Engine 11.98% failure rate
--------------------------------	---	--------------------------------------	----------------------------------

Warranty Direct Rating ABOVE AVERAGE

PEUGEOT 3008

Average Repair Cost £171.10	Electrical 46.15% failure rate	Axle & Suspension 15.38% failure rate	Engine 15.38% failure rate
--------------------------------	--------------------------------------	---	----------------------------------

Warranty Direct Rating ABOVE AVERAGE

SUM UP The Nissan is rightly popular, the interior is more spacious and it is also better value, plus Warranty Direct say it is cheaper to repair.

IN ASSOCIATION WITH





*There may be
trouble ahead!*

"Cylinder Head £1500" - Source: Warranty Direct data, 2012

Are you driving a car that's no longer under warranty?

Then you could be driving around in a ticking financial time bomb! Any second it could go bang, and blow your socks off with sky high repair bills.

Don't risk it – get your car protected with an insured warranty from Warranty Direct. Warranty Direct offers comprehensive cover that's recommended by WhatCar?

Once your car reaches three years old the manufacturer's warranty protection usually expires. A warranty from Warranty Direct will protect your car and your wallet.

Call 0800 731 7001 | **buy online** www.warrantydirect.co.uk



Did you know?

Highest repair bills paid by Warranty Direct during 2013:

New Engine	£16,165.38	Drive Chains	£3,464.87
Complete Gearbox	£20,797.88	ECU	£3,395.84
Piston Rings	£2,285.26	Water Radiator	£3,497.71
Torque Converter	£3,182.50	Shock Absorber	£1,654.80



***Get a quote today at warrantydirect.co.uk
We might just save you a fortune!***

Call 0800 731 7001 | buy online www.warrantydirect.co.uk



KAMARA'S PARKING CHALLENGE

THIS IS NO ORDINARY
SLOT OR PARALLEL
MANOEUVRE. IT'S MUCH
FUNNIER THAN THAT.

England football players past and present, go head to head with a supercar and a Vauxhall Corsa VXR, testing which can manoeuvre first into a parking space. As Harry Kane provides the skill behind the 205hp Corsa VXR and John Barnes takes the wheel of the 700hp supercar, the #kamarachallenge has precision driving that makes even commentator Chris Kamara lose his nerve.

In the irrepressible style his fans have become acutely accustomed to, Chris Kamara stumbles through the commentary, missing crucial action and fluffing lines.

Using the half-time whistle to re-fuel with a pie, he resumes his journey as a passenger being turned upside-down in the new Corsa VXR.

Chris Kamara commented on the filming, "It could be a scene from any busy shopping centre car park on a Saturday morning near Sainsbury's. I've witnessed people who'd sell their own granny for a parking spot. The smart money was always on Harry Kane, he's leaner, meaner and probably greener in the new Corsa VXR compared to Barnsey who has quite clearly had his day."

Football legend John Barnes retorted saying, "Harry

Kane might have been nimble in the new Corsa VXR but on the pitch it would be a different story. I'd be all over him."

Harry Kane who appeared in the #kamarachallenge as part of an appearance supporting Vauxhall's sponsorship of the Home Nations, said, "The #kamarachallenge was everything you'd expect it to be, fast, furious and fun."

Watch #kamarachallenge and see exclusive behind-the-scenes shots by visiting www.vauxhall.co.uk/kamarachallenge.



BADA BING

Here's an offer you can't refuse, bid for legendary mobster's Escalade.

The white 2003 Cadillac Escalade ESV used on screen by James Gandolfini in his iconic role as Tony Soprano will be auctioned by Boston-based, RR Auction.

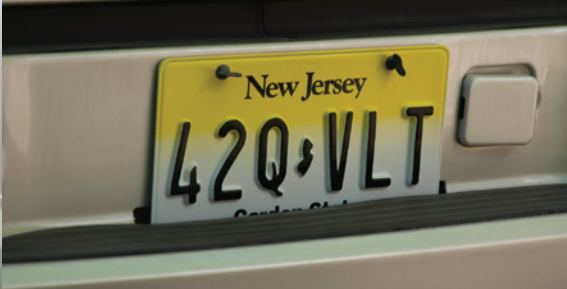
The vehicle was used during the last three seasons of the award-winning HBO series *The Sopranos*. It was originally leased through Movie Time Cars Incorporated as one of two identical vehicles used in production, with this specific

car used primarily for exterior shots including those showing Tony Soprano and his associates entering, exiting, and driving, as well as in shots where the car appeared in the scene during dialogue.

The Escalade represented Tony's personal car and primary means of transportation, frequently used to show him going to and from his own driveway, meetings with members of the New York families, and the notorious landmarks of the Sopranos' fictional universe like the Bada Bing strip club and Satriale's Pork Store. It was also utilised in action sequences including the infamous chase from season five in which Tony, angrily trying to collect a debt, drives Phil Leotardo off the road and into a parked car.

James Gandolfini has also prominently signed the interior of the Escalade twice in black felt tip, once inside the driver's side sun visor, "Thanks for the truck, James Gandolfini," and once on the panel above the glovebox, "James Gandolfini."

The Music and Entertainment Icons Auction from RR Auction will take place from November 12 to November 19. www.rrauction.com



AVAILABLE:
NOW
PRICE:
From £45,989



RARE AND VERY DARK SPORTS CAR

PORSCHE CAYMAN BLACK EDITION

This limited edition is mostly black with a black partial leather interior but it also has the Porsche Communication Management (PCM) with satellite navigation (with Online services featuring real-time traffic information), automatic anti-dazzle rear view mirrors, rain sensor, cruise control, front and rear ParkAssist and a Sport Design steering wheel. Not only that, the driver and passenger enjoy a two-zone climate control system, heated seats and Bluetooth phone connectivity. The Cayman Black Edition also comes with the high-quality audio system Sound Package Plus.



AVAILABLE:
NOW
PRICE:
From: £11,155
& 0% finance



LIMITED EDITION CUTE CITY CAR

SEAT MII BY MANGO

The new Mii by MANGO Limited Edition just 750 of them will go on sale across Europe. They are recognisable at first sight from the exclusive three-coat paintwork in "Oryx white", with the door

mirrors and wheels finished in a powerful, deep shade of red called "Velvet". Exterior details match some interior details, like the steering wheel, air vents and instrument panel. How fashionable is that?



DEPOSIT CONTRIBUTIONS AND EASY PAYMENTS

AVAILABLE:
NOW
PRICE:
From £249 pcm

RENAULT SPECIAL OFFERS

Although there is up to £2,259 manufacturer deposit contribution available on Clio Dynamique Nav 1.2 and £5,109 off the all-electric ZOE Dynamique Nav these offers include the brilliant All-New Renault Kadjar crossover which is available on the Selections

PCP package from £249 customer deposit and £249 a month with a manufacturer deposit contribution of £429. Alternatively, with the 0% APR 4-year Hire Purchase scheme, all versions of Kadjar are available with £600 manufacturer deposit contribution.

DON'T PANIC



IN CINEMAS 2016



SEIKO PREMIER

Designed for Novak Djokovic so this Kinetic Perpetual must be brilliant.

As in every Kinetic caliber, the wearer's movement powers the watch, but, with Kinetic Perpetual, this energy is conserved in a uniquely practical way. If the watch is unworn, it puts itself into sleep mode and remembers the exact time and date for up to four years. As soon as it is picked up again, it wakes up and automatically restarts to the correct time and date including leap years until February 2100. Kinetic Perpetual is the pinnacle of Seiko's unique Kinetic achievement and is already greatly loved by many, all over the world, for its convenience and precision.

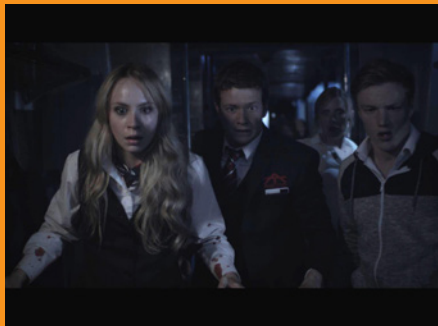
www.seiko.com



TUMI MINI FROM £300

TUMI's colorful MINI by TUMI accent kits offer striking personalization options for a truly custom-made look. The styles within the collection utilize the colors and prints signature to MINI: Black/Volcanic Orange racing stripe and Black/Deep Blue Union Jack flag; the lining of every bag is embossed with the MINI grill pattern.

uk.tumi.com



HOWL

Young ambitious ticket collector Joe is overseeing the last train out of London on a dark and stormy night - the usual collection of passengers on board from the obnoxious teen to the workaholic businesswoman. Suddenly the train screeches to a halt in a forest after hitting something on the tracks. Yes it's a brilliantly original horror film.

In Cinemas and on DVD



BUILD A TOY ENGINE FROM £19.99

Comes complete with its very own Haynes Manual giving you clear step-by-step instructions to guide you through the build process, all you need to provide is the time, two batteries and a little vegetable oil. The on/off controller also includes a sound chip, which reproduces the noise of an engine starting, as the model begins to work.

www.halfords.co.uk

DESIGNED TO SAVE CYCLISTS

VOLVO CARS LIFEPAINT MAKES A DIFFERENCE



By popular demand, Volvo Cars UK have launched its highly successful Volvo Cars LifePaint product a reflective spray aimed at increasing the visibility and safety of cyclists on the road. It will be available in participating Volvo dealers from 24th October in time for darker nights when the clocks go back.

The unique reflective spray, which was first available as part of a limited pilot in April 2015, is designed to react to a car's headlights, alerting drivers to the presence of cyclists in the dark.

The product, first distributed through six London bike shops, ran out within 24 hours creating massive demand for wider distribution. From this weekend the product will be available in participating Volvo dealers and customers will be invited down to take part in events to demonstrate how the product works as well as purchase some for themselves.

Volvo Cars LifePaint is a unique illuminating safety paint which is invisible by daylight, but in the dark reflects light in the same direction as the light source, shining brightly to illuminate the objects it has been sprayed on. Volvo Cars LifePaint is transparent and can be washed off. It can be applied to clothes, shoes, helmets, pushchairs and children's backpacks – even dog leads and collars. Its aim is to make the invisible visible at night. Volvo has secured a further partnership with the makers of the product, Swedish start-up Albedo100 to distribute the product through its dealer network for £9.

https://youtu.be/AJbmfMz_10

VISIT
VOLVOCARS.COM/
UK/LIFEPAINT



TV & Film

The '70s are Back - Again

Film and Television producers go to this decade because the cars are cooler.



Black Mass (Cinemas)

While his brother Bill (Benedict Cumberbatch) remains a powerful leader in the Massachusetts Senate, Irish hoodlum James "Whitey" Bulger (Johnny Depp) continues to pursue a life of crime in 1970s Boston. Approached by FBI agent John Connolly (Joel Edgerton), the lawman convinces Whitey to help the agency fight the Italian mob. As their unholy alliance spirals out of control, Bulger increases his power and evades capture to become one of the most dangerous gangsters in U.S. history. Plus there are some lovely early '70s Cadillacs.

The Kennedys (BBC 1 and iPlayer)

The Kennedys is a multi-generation aspirational family comedy, set in the 1970s. It is created and written by actress, writer and TV presenter Emma Kennedy. The six-part series is loosely based on her memoirs. Each episode is introduced by Emma (played by Lucy Hutchison),

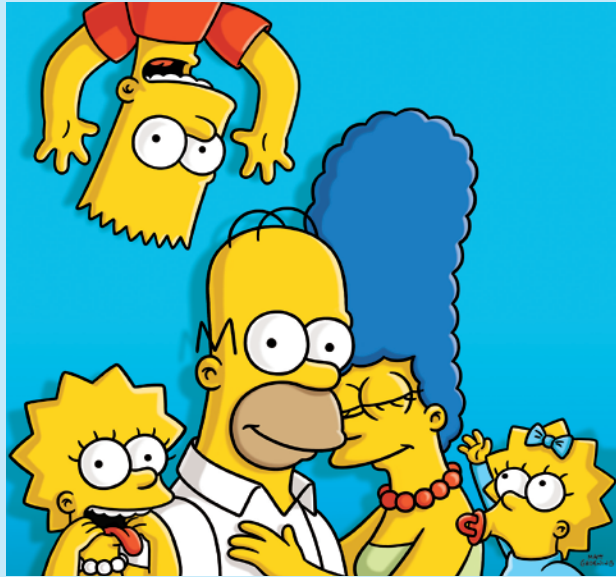
a 10-year-old Star Wars obsessed tom-boy who is happy to tag along with her much-loved parents, Brenda and Tony. Keep an eye out for the '70s motors around the executive housing estate, we can spot a Ford Cortina and a Riley Elf.



The Detectorists (BBC Four)

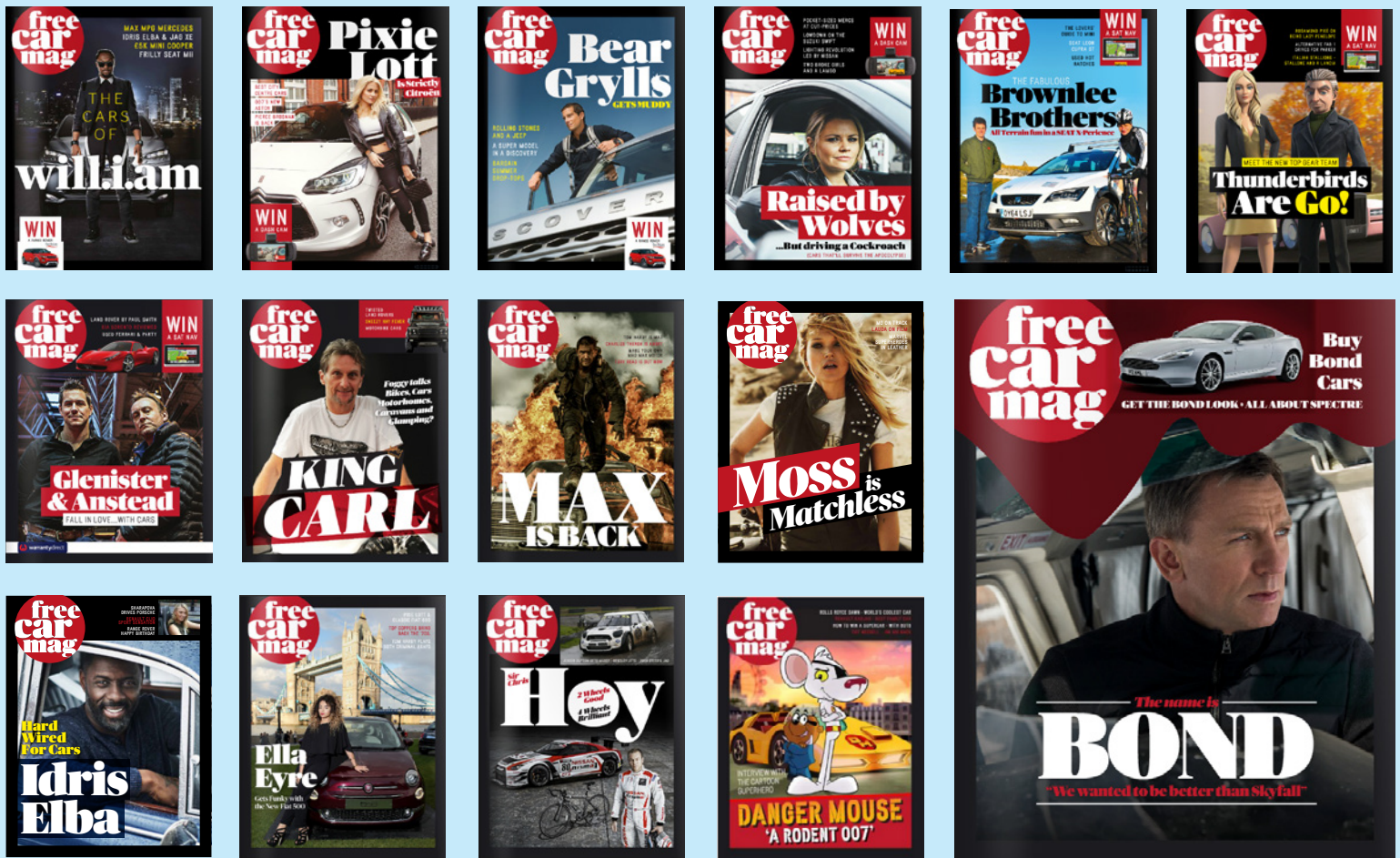
Detectorists follows the relationship between two friends who share a passion for metal detecting. When Andy (Mackenzie Crook) and Lance (Toby Jones) are together, they argue, but there is a true bond underneath. Each has their own slightly dysfunctional lives but together they dream of

finding a priceless Saxon hoard that will cement their place in detecting history. Andy and his wife Becky are now proud parents, facing all the responsibilities that brings, but despite qualifying as an archaeologist, Andy is still mostly unemployed. Best of all Toby Jones has a bright yellow Triumph TR7.



NEXT ISSUE

You may not realise it but The Simpsons are coming. Not only is there a new Channel 4 series, but Christmas is coming too. So we look at plenty of classy motoring gifts that you can ask your loved one to get for you. Otherwise, Free Car Mag will be immersed in celebrity car culture as usual and we have exciting news about Ben (STIG) Collins' brilliant new DVD, another inspired gift idea.



DOWNLOAD EVERY ISSUE TO YOUR MOBILE, TABLET OR WHATEVER



BATMAN

ARKHAM KNIGHT



FLYSCREENQUEEN.CO.UK
01760 441423

FOLDING ROLLER SLIDING AND CHAIN
SCREENS FOR DOORS AND WINDOWS FOR HOME
AND BUSINESS, DIY KITS ONLY

